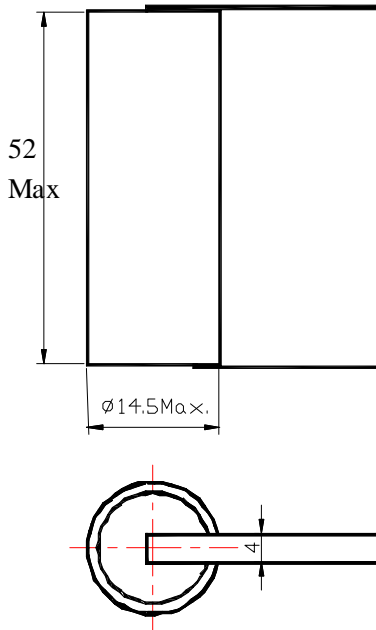


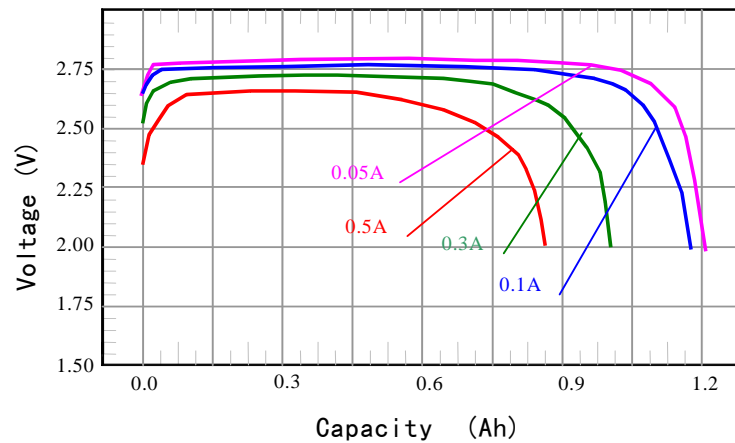
## ▶ MODEL NO.:WR14505



### ■ SPECIFICATION (20±2°C)

Nominal capacity (50mA ~2V):	1.1 Ah
Rated voltage:	2.9 V
Max constant current of discharge:	500 mA
Max discharge current (pulse):	1000 mA
Weight:	18 g
Operating temperature range:	-55~65°

### ■ Discharge Characteristics at 20±2°C



S: Standard termination

#### Notes:

Dimension: mm  
 Special terminations can be Made as requested.  
 T: Solder tabs  
 P: Axial pins

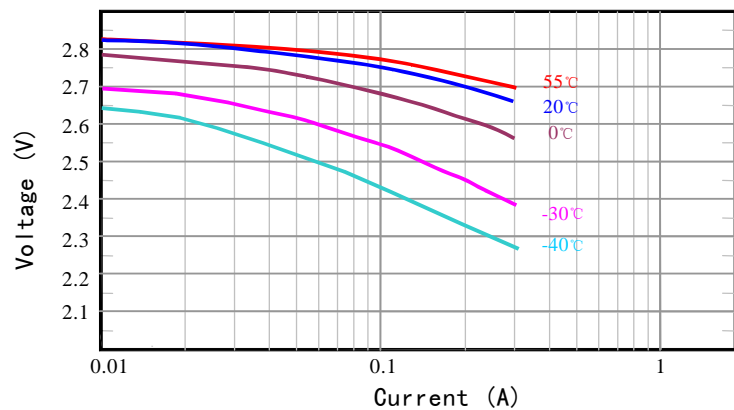
#### ■ Important Notes:

Do not short or charge the battery.

Over-discharging, crushing, incinerating, and disassembling the battery are prohibited.

Do not heat/use the battery beyond the permitted temperature range.

### ■ Voltage VS. Temperature



### ■ Capacity VS. Current

