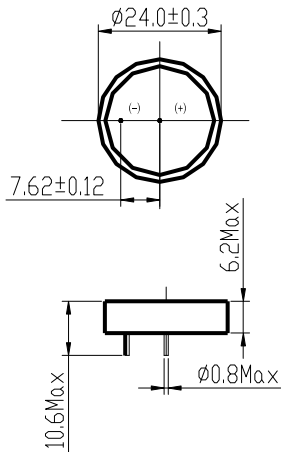


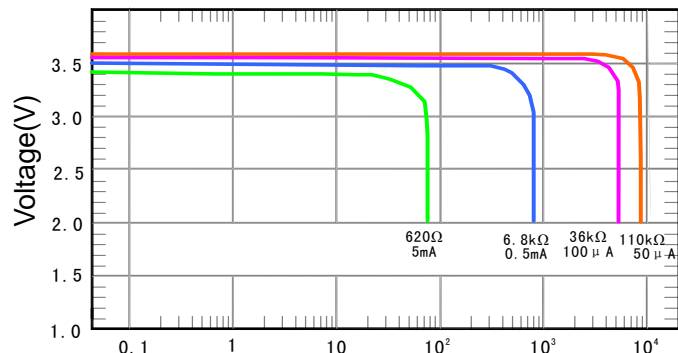
# ER2450



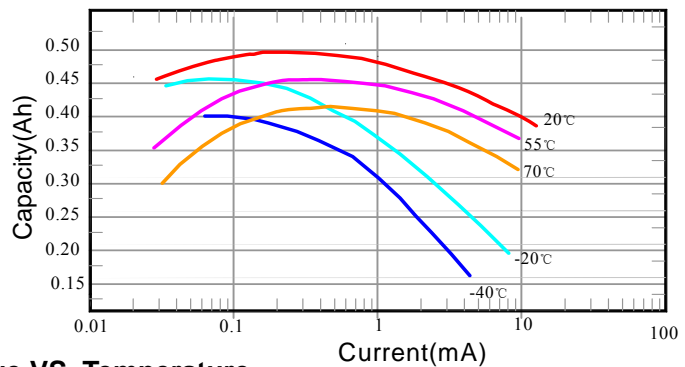
**SPECIFICATION: (23±2°C)**

Nominal capacity (0.1mA~2V):	0.5Ah
Rated voltage:	3.6 V
Max constant current of discharge:	5mA
Max discharge current(pulse):	15mA
Weight:	9g
Operating temperature range:	-55? ~+85°C

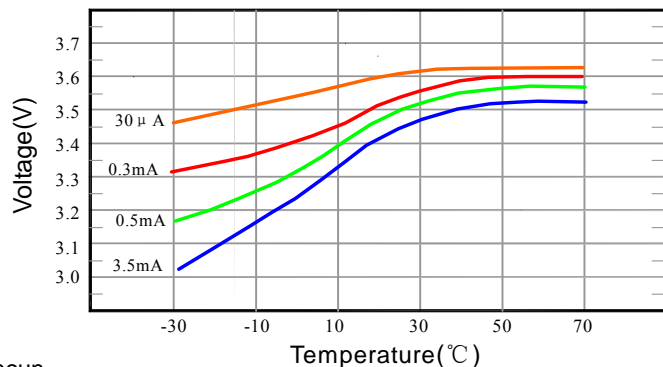
**Discharge characteristics at 23±2°C**



**Capacity VS. Current** Time(hr)



**Voltage VS. Temperature**



S: Standard termination

**Notes:**

Dimension: mm

Special terminations can be made as requested.

T: Solder tabs

P: Axial pins

**Important Notes**

Do not short or charge the battery.

Over-discharging, crushing, incinerating, and disassembling the battery are prohibited.

Do not heat/use the battery beyond the permitted temperature range.



Guangzhou Markyn Battery Co., Ltd.

YiJia Industrial Park , Shixin Road 1100 ,Nancun

Town,Panyu District, Guangzhou P.R.C

Tel:(86)20 — 8456 0852 Fax:(86)20 — 3476 7936

Email:sale s@gmbattery.com

 U.L. Component Recognition MH 45782