

GMBPOWER

GMB LITHIUM BATTERIES

Lithium Thionyl Chloride battery(Li/SOCL₂)
With High Temperature High Energy Type

Engineer Sam Xu
Guangzhou Markyn Battery Co., Ltd

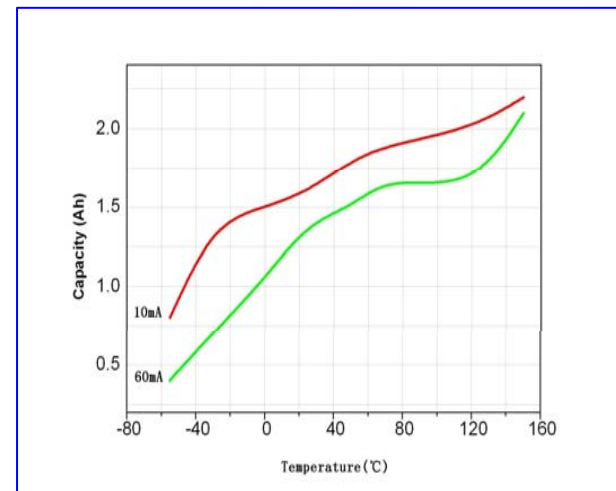
GMB PRODUCTS

HI-TEMPT. LI/SOCI2 Battery

The high energy LI/SOCL2 battery is a new high energy battery.

Characteristics:

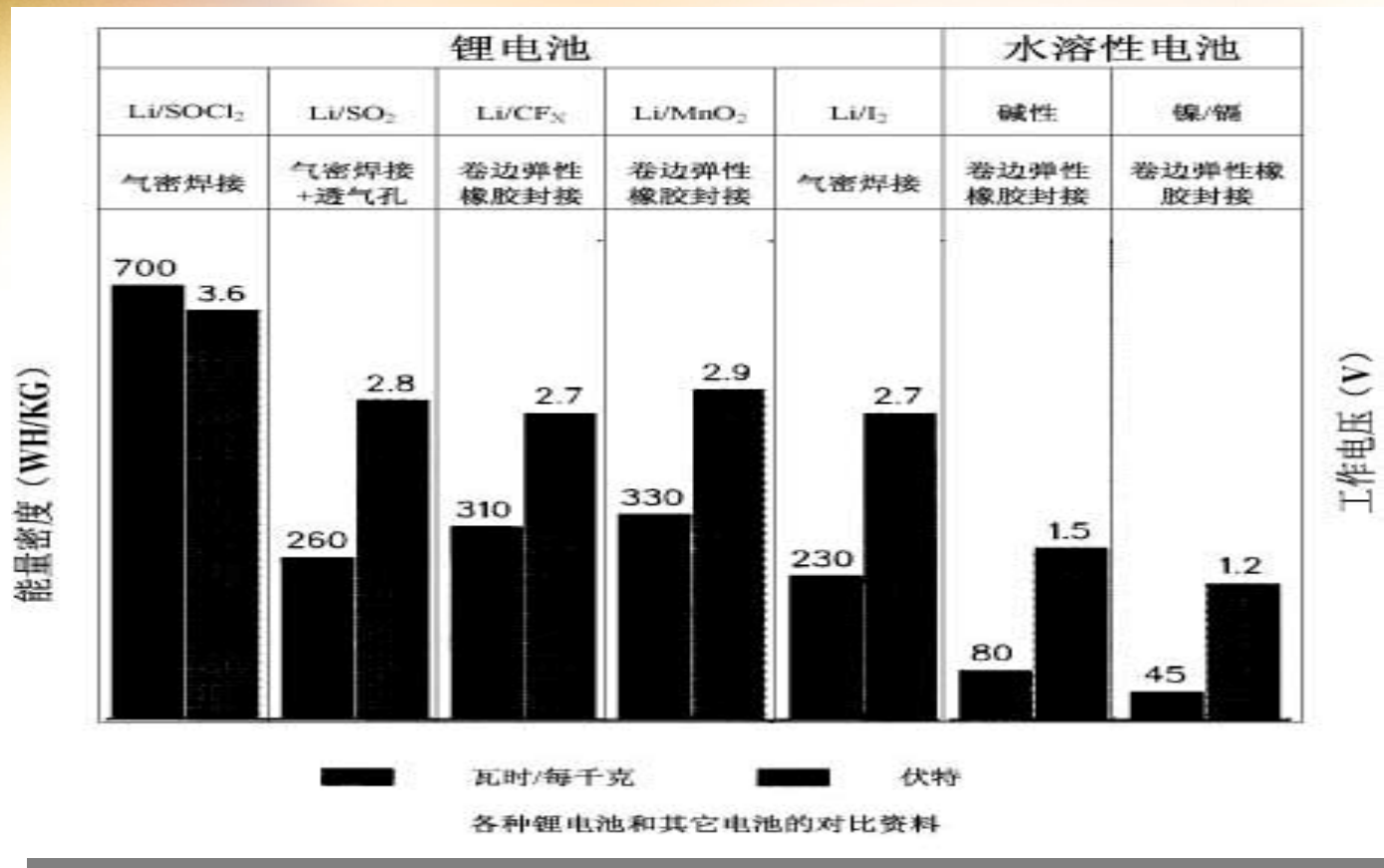
- High and stable operating voltage: (3.6V)
- Long storage life, Low self-discharge rate (<1%)
- Long storage life (over 15 years under normal room temperature)
- Wide range of operating temperature range ($-55 \sim +85 \text{ }^{\circ}\text{C}$,
- GMB battery operating temperature range is $-55 \sim +150 \text{ }^{\circ}\text{C}$)
- High energy density can reach more than 700Wh/kg.
- Good safety performance
- Not lead, mercury, cadmium etc heavy metals.



In different environment
Electricity Performance

GMB PRODUCTS

HI-TEMPT. Li/SOCI₂ Battery



□ GMB PRODUCTS

HI-TEMPT. LI/SOCI2 Battery

Main Applications:

- ◇ Oil Instruments
- ◇ TPMS(Tire Pressure Monitoringsystem)
- ◇ Wireless Alarm/Sensor
- ◇ Long-distance monitoring system



□ GMB PRODUCTS

HI-TEMPT. LI/SOCI2 Battery

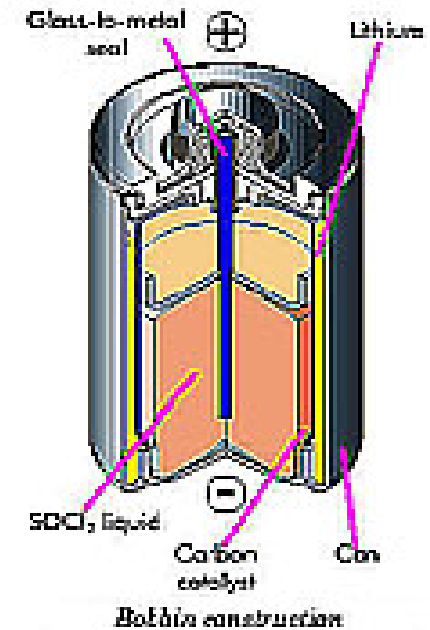
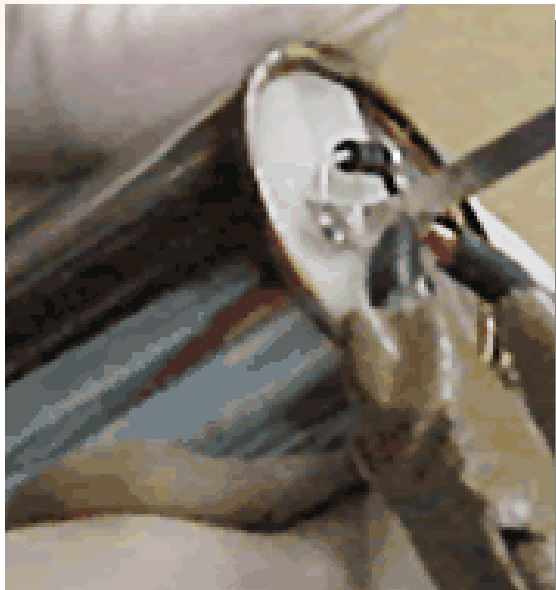
GMB high-temperature battery products

No.	Model	Nominal voltage (V)	nominal discharge current (V)	Nominal capacity (Ah)	Operating temperature (°C)	Remarks
1	ER14505S	3.6	2.0mA	1.60	-55~+150	
2	ER18505S	3.6	3.0mA	3.20	-55~+150	
3	ER26500S	3.6	4.0mA	6.00	-55~+150	
4	ER34615S	3.6	10.0mA	10.50	-55~+150	
5	ER341245S	3.6	10.0mA	36.0	-55~+150	
6	ER2450S	3.6	0.5mA	0.50	-55~+150	
7	EF651615S	3.6	0.5mA	0.50	-55~+150	
.....						

GMB PRODUCTS

HI-TEMPT. LI/SOCl₂ Battery

GMB Unique Exterior Structure and Security Structure Design



GMB PRODUCTS

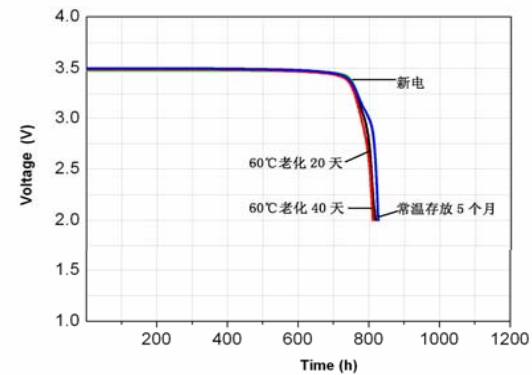
HI-TEMPT. LI/SOCI2 Battery

ER14505S Storage self-discharge validation

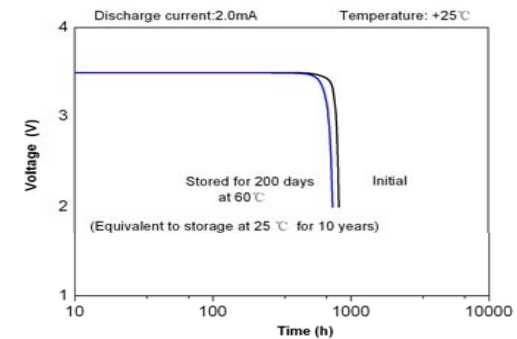
No.	Assembly time	Capacity (mAh)	Remarks.
1	New Battery (Before ageing)	1650	
2	60 °C ageing 20days	1636	equal to storage one years under normal temperature
3	60 °C ageing 40days	1621	equal to storage two years under normal temperature
4	Normal temperature Storage five months	1652	

Conclusion: Annual self-discharge less than 1%

Above is accelerating storage test test data. It is according to Japanese MAXLL lithium battery technology specification, and Israel TADIRAN lithium battery technology specification.



Storage battery electric performance curve with New



technical graphics

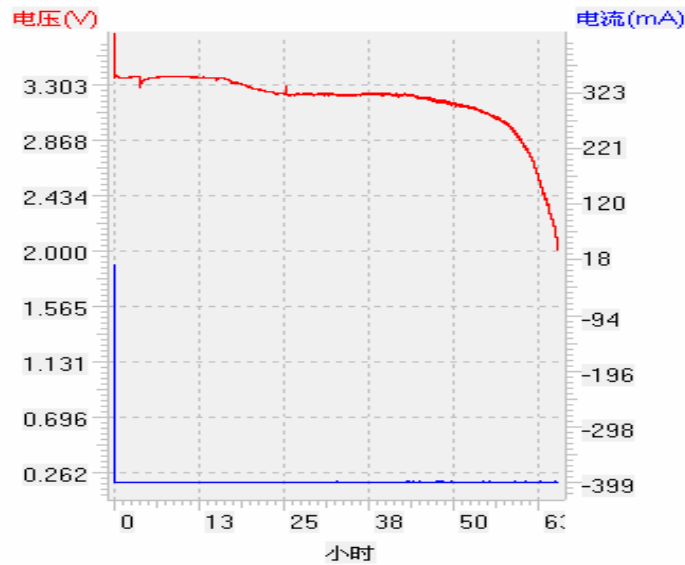
GMB PRODUCTS

HI-TEMPT. LI/SOCI2 Battery

ER341245S+150°C Battery Discharge Testing data

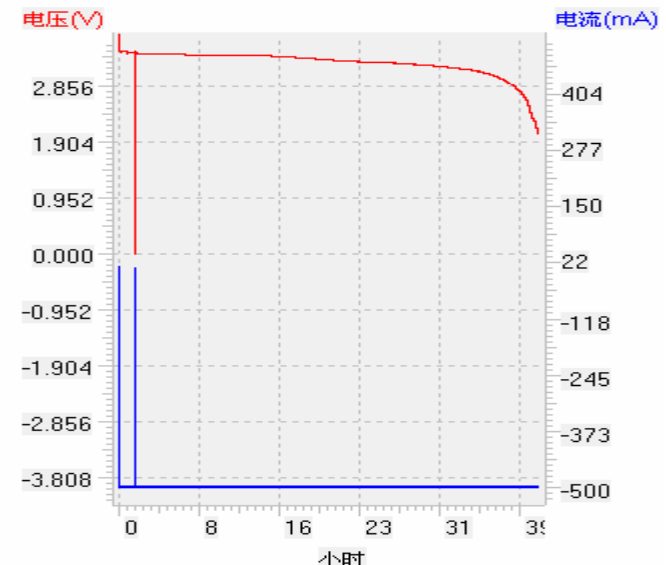
No.	Model	Test current (mA)	Capacity (Ah)	Discharge temperature (°C)	Remarks
Graph1	ER341245S	400mA	26220.5	+150	
Graph2	ER341245S	500mA	20542.7	+150	

循环层 工步层 记录层 实时曲线



Graph 1

循环层 工步层 记录层 实时曲线



Graph 2

□ GMB PRODUCTS

HI-TEMPT. LI/SOCI2 Battery

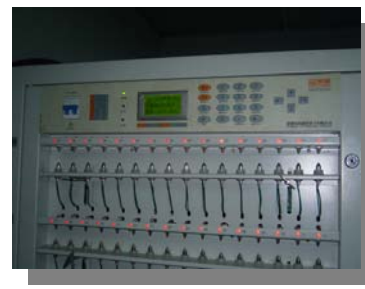
According to the product market analysis and forecast, and forecast product market competition ability; Combining the construction condition and planning, production capacity of the enterprise, the construction condition, and their production ability; We determine the scale of construction projects as follows:

Main production system: A complete set of equipment from American MUNTERS

Monitoring equipment: A complete sets of equipments 3750 - MP from Swedish Vaisala

Production environment: low dust (class100), low humidity ($\leq 1\%$)

Main testing equipment: CHI600C electrochemical tester(ShangHai ChenHua),Lithium battery dedicated test system (ShenZhen XinWei)



□ Company Culture



Hard Working

All our staff are working to ensure best quality of our batteries and five-star service



Team Work

Not only with our agents, but also with our customers all over the world



Customers First with Diamante Service

Customers' interests always goes first, they will be not only guaranteed from GMB of High quality battery products, but 100% replacements totally at GMB's expenses if there are defective shipment found



GUANGZHOU MARKNY BATTERY CO., LTD

Add.: Unit2310, Yijing Yun(Jiner Liser), Block B1, DashiTown, Panyu District, Guangzhou City, PRC
Tel: 0086-20-34794061 61906348 Fax: 0086-20-61906358 Post Code: 511430
E-mail: info@gmbattery.com